

# MOORABOOL WIND PROJECT INTRODUCTORY INFORMATION



*This Information sheet was first issued by WestWind Energy in May 2009*

## WHAT IS BEING PROPOSED?

WestWind is proposing to develop a wind farm on land shown in the plan on the last page. The purpose of the project is to supply electricity into the National Electricity Grid.

The proposal consists of 128 wind turbines in two sections. The Bungeeltap Section, to the north, is proposed to contain 58 wind turbines, and the Ballark Section, to the south, is proposed to contain 70 wind turbines.

The wind turbines will be mounted on towers and will have a rotor diameter of up to 104m. Each wind turbine will have a total height of no more than 150m from natural ground level to the tip of the blade at its zenith. Each wind turbine will have a rated capacity of between 2 to 3.3 megawatts (MW).

An example of the make and model wind turbine we would consider for the Moorabool Wind Project is the Enercon E-82 (refer to photograph included in the Information Pack). This is the wind turbine that is expected to be installed at WestWind's Mt Mercer Wind Farm.

---

## KEY FACTS

- If 2MW wind turbines are used the project will have an installed capacity of 256MW.
- Expected to generate 784GWh of electricity each year which is equivalent to the consumption of 147,000 average Victorian homes.
- There are 14 host landholders involved in the project.
- The project will cost approximately \$750M. A significant proportion of this will be spent locally.
- During construction the project will create approximately 100 full time positions. There will be approximately 25-30 full time ongoing positions to operate the wind farm.
- The wind farm will physically occupy approximately 1% of the total project site.

---

## THE WIND TURBINE LAYOUT OF THE PROPOSED PROJECT

Determining the layout of infrastructure in a wind farm is a detailed and complex process.

The attached 'proposed' layout has been designed to maximise the utilisation of the wind resource of the area while considering the agricultural practices of the host farmers and the opportunities and constraints (such as communication links and native vegetation) identified by specialist consultants.

This layout is likely to change to some degree as additional investigations occur. It may also change in response to community feedback and as a result of the approvals process. At this stage only the location of turbines is shown. The location of other infrastructure such as access tracks will be added as the layout is finalised.

---

## SPECIALIST STUDIES

In developing the proposal it is critical that we gain a comprehensive understanding of the project site and its surrounds. To do this, a number of technical studies have been completed to get to the current state of our proposal with more to be completed. Such studies include but are not limited to:

- Plants and animals, in particular bats and birds;
- Landscape and visual impact assessment;
- Traffic and road safety;
- Indigenous and European heritage; and
- Wind farm operation noise.

---

## HOW WILL I BE CONSULTED?

WestWind aims to discuss the project in person with residents within the vicinity of the project site. This will generally be residents within 1.5km of a proposed wind turbine. WestWind will be door knocking within this area between the **18<sup>th</sup> and 22<sup>nd</sup> May 2009**. If this is inconvenient an alternative time can be arranged.

WestWind will be providing information on the project to residents within 3km of a proposed wind turbine location and will be available to discuss the project with them should they wish.

**We would encourage people to register for future updates and information on the project using the registration form in the information pack.**

The proposed layout (back page) may change after feedback is received and additional investigations are carried out. Accordingly, the next wind farm layout you see may be slightly different.

The planning permit process provides a formal opportunity for people to lodge a submission on the proposal. It also allows those who lodge a submission to have it heard in person by an independent planning panel appointed by the Minister for Planning.

An information session for stakeholders will be held after the planning permit process commences.

The flowchart in the information pack outlines steps in the assessment process in more detail.

---

## WHEN WILL THE PROJECT COMMENCE?

In May 2009 WestWind will aim to:

- ask the Minister for Planning to determine whether an Environmental Effects Statement is required.
- refer proposal to the Commonwealth for determination as to whether the proposal is a 'controlled action' under the Commonwealth's *Environment Protection and Biodiversity Conservation Act 1999*.
- commence consultation with adjoining land owners and occupiers and other key stakeholders.

June to July 2009 WestWind will aim to:

- incorporate feedback into wind farm design and the project proposal.
- lodge planning permit application for the proposal.

(Indicative) July to December:

- Formal consultation process and exhibition of the project.
- Planning assessment and planning panel hearing and recommendation.

(Indicative) Early 2010:

- Decision on permit application

(If approved) 2010 / 2011:

- detailed engineering design work including follow up from planning permit conditions, negotiations with network operators.

(Indicative) 2012:

- Commence construction.

(Indicative) 2014:

- Completion of construction and commissioning and generation of electricity.

---

## WHERE DO I GO FOR FURTHER INFORMATION?

For further information on the Moorabool Wind Project please:

- Complete (and post back to WestWind) the enclosed registration form to allow us to keep you informed on key developments regarding the project;
- Visit [www.w-wind.com.au](http://www.w-wind.com.au) for information on this and other WestWind projects;
- Contact WestWind Energy on **(03) 53 21 02 10** to: arrange a convenient time to meet with representatives from the company and/or to be included on our mailing list for future project updates; or
- Contact the Project Manager

Mr Phil Burn:

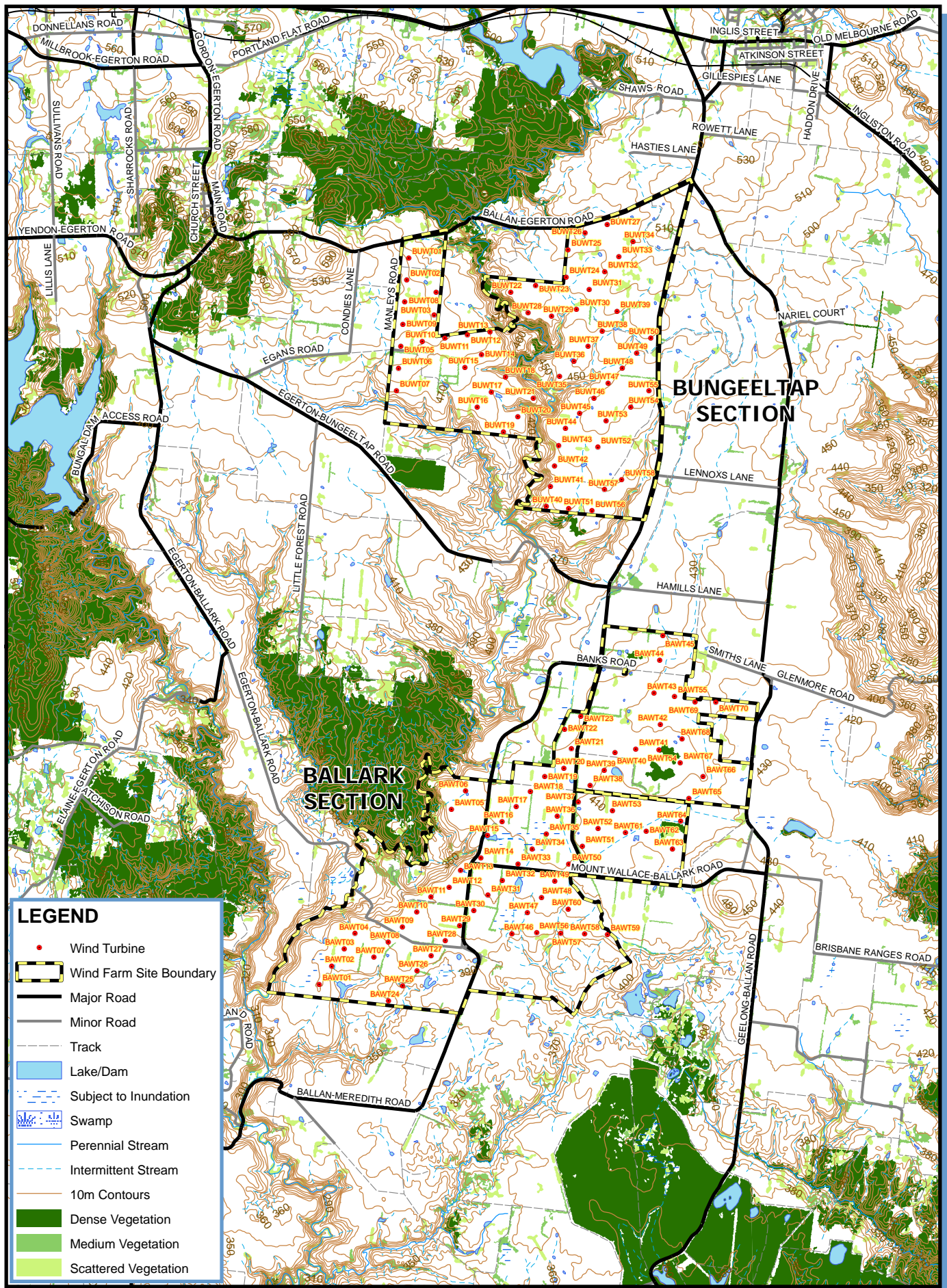
Project Developer

email [burn@w-wind.com.au](mailto:burn@w-wind.com.au)

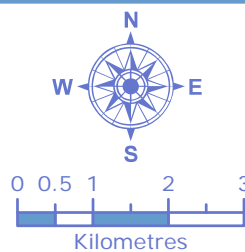
(03) 5421 9977 (Head Office, Gisborne)

0407 864 097 (Mobile).





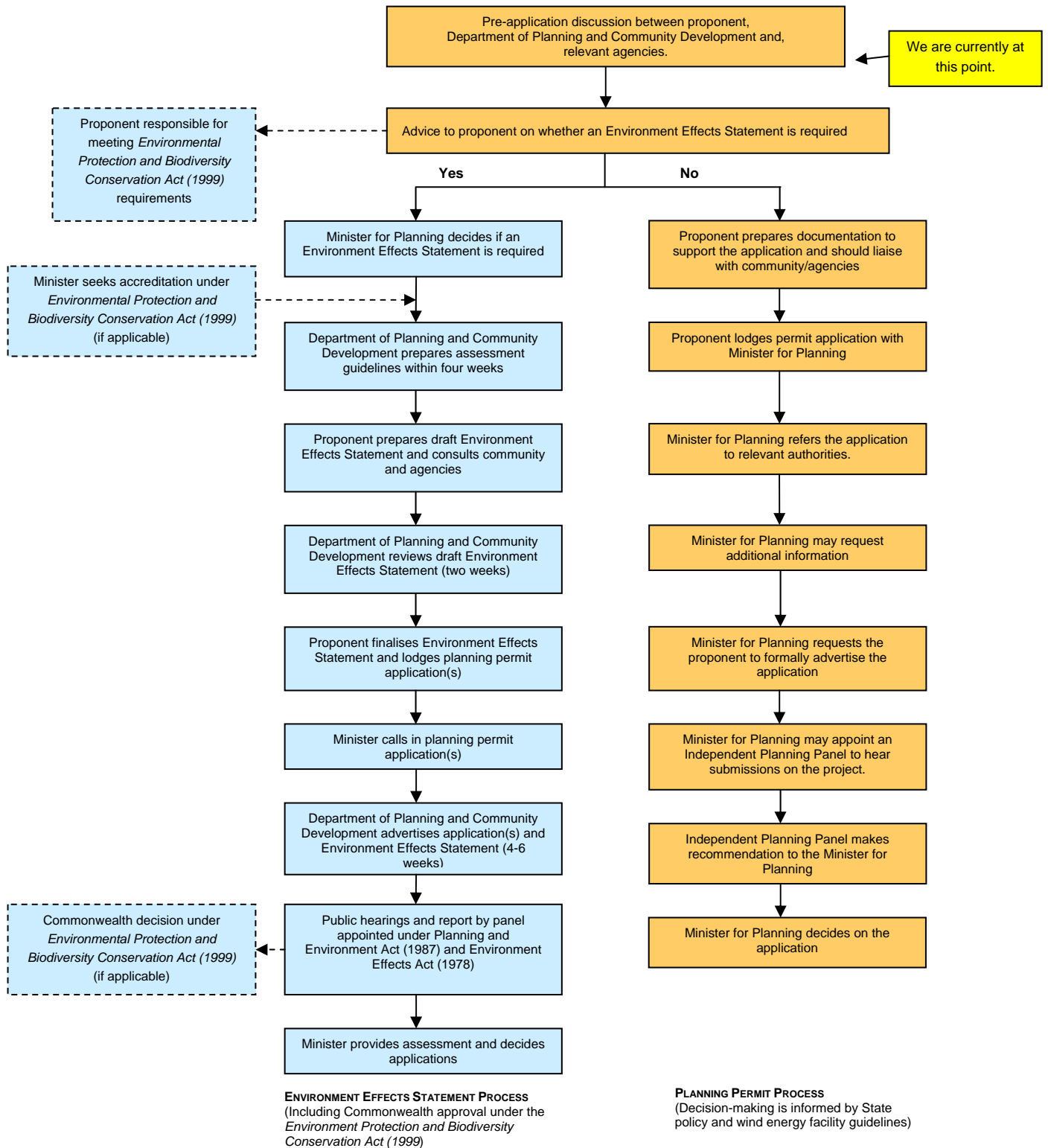
File:	MWP_SM_0001
Version:	1
Original Size:	A4
Map Scale:	1:100,000
Drawn by:	ASG
Date:	20090430



## Proposed Wind Farm Layout

Moorabool Wind Project

## Expected Assessment Process for the Moorabool Wind Project



Amended from Sustainable Energy Authority Victoria

Likely planning process for the Moorabool Wind Project.





File:	MWP_Img_0001
Original Size:	A4
Map Scale:	N/A
Drawn by:	GBF
Date:	20090507

## Enercon E-82 Wind Turbine

Moorabool Wind Project